

# Rolling Security Grilles and Closures of Superior Design



Roll-Vision



Roll-126



Roll-Air



**VRINDA INC.**

[www.GlassEssential.com](http://www.GlassEssential.com)

Phone: 1-877-874-6321

Fax: 1-877-874-6564

SHOPPING MALLS  
BANKS • PUBLIC BUILDINGS • SCHOOLS  
AIRPORTS • OFFICES • KIOSKS • HOSPITALS • STATIONS • SHIPS  
RECEPTION DESKS • STADIUMS • WINDOW PROTECTION





# Counter Shutter

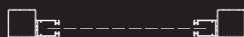
## Counter Shutter

### ATTRACTIVE SOLUTION FOR SMALL OPENINGS

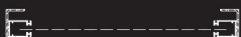
The MobilFlex **Counter Shutter** features attractive slimmed-down components that won't cramp your display room. Solid aluminum slats enhance any interior, making it the perfect solution for service counters, booths, ticket windows, and kiosks.

#### SUPPORT POSSIBILITIES:

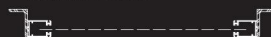
- BETWEEN 3"x3" (76x76mm) OR 4"x4" (102x102mm) STEEL TUBES



- BETWEEN IN OR OUT 2"x3" (51x76mm) STEEL ANGLES



- BETWEEN IN OR OUT 2"x3" (51x76mm) ALUM. ANGLES



- BETWEEN 1 3/4"x4" (44x102mm) ALUM. TUBES



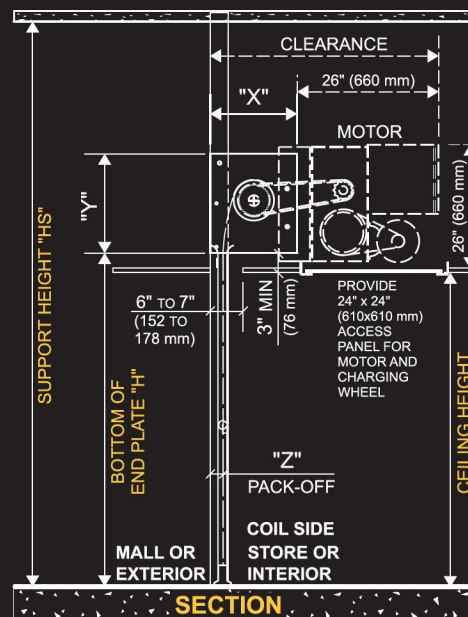
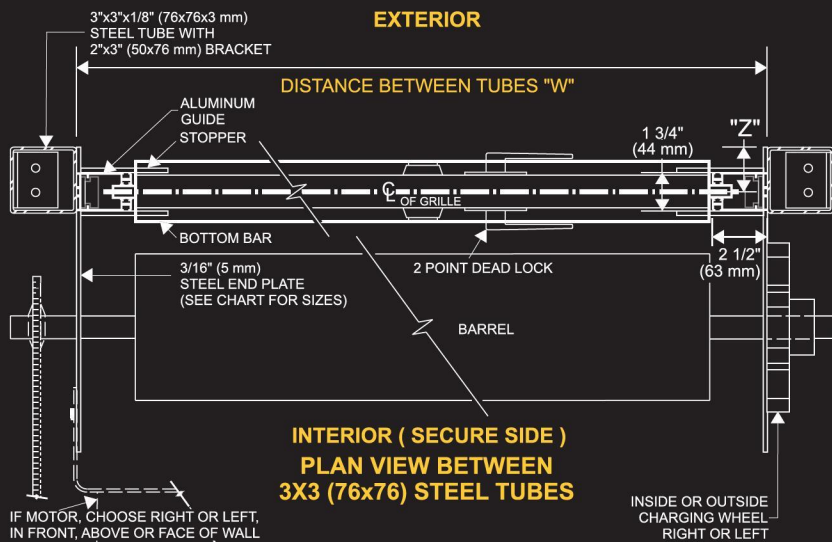
#### OPERATION:

- MANUAL OPERATION WITH PULL ROD
- MOTORIZED OPERATION WITH BUILT-IN INTERLOCK STOP AND EMERGENCY RELEASE WITH PRESS BUTTONS OR KEY SWITCH
- HAND CRANK OPERATION
- CHAIN DRIVE AVAILABLE (BUT NOT RECOMMENDED)

#### HOOD:

- FACIA (1 SIDE)
- END CAP
- 2 SIDES
- 3 SIDES
- 4 SIDES

CLEAR ANODIZED .032" (0,8mm) ALUMINUM SHEET



For more details or a FREE evaluation, please contact one of our specialists.



## VRINDA INC.

[www.GlassEssential.com](http://www.GlassEssential.com)

Phone: 1-877-874-6321

Fax: 1-877-874-6564



| CEILING HEIGHT |               | END PLATE   | PACK-OFF |
|----------------|---------------|-------------|----------|
| OPEN STYLE     | FULL PANELS   | "X" x "Y"   | "Z"      |
| UP TO          | UP TO         | 12" x 12"   | 2"       |
| 7'0" (2,13m)   | 13'0" (3,96m) | (305x305mm) | (51mm)   |
| 7'1" (2,16m)   | 13'1" (3,99m) | 14" x 16"   | 2 1/4"   |
| TO             | TO            | (355x406mm) | (57mm)   |
| 10'0" (3,05m)  | 18'0" (5,49m) |             |          |
| 10'1" (3,07m)  | 18'1" (5,51m) | 16" x 18"   | 2 1/2"   |
| TO             | TO            | (406x457mm) | (63mm)   |
| 15'0" (4,57m)  | 20'0" (6,10m) |             |          |